

expedition **Africa** 2012

EXPEDITION DETAILS



FOOD



WATER

impossible2Possible (i2P) will lead **8 Youth Ambassadors** on the journey of their lives as they run across some of the most beautiful regions in the **Republic of Botswana** - a country of 2 Million people that is located just north of South Africa. Most of the country is covered by the **Kalihari Desert**, which is currently thirsting and starved by drought. The **educational topic for this project will be water** and students from around the world will have their eyes opened to our most precious resource.

i2P MISSION & VISION

The **mission** of impossible2Possible (i2P) is to use the platform of adventure and technology to educate, inspire, and empower the global community to reach beyond their perceived limits and make positive change in the world.

The **vision** of i2P is to cultivate a generation of leaders who, through direct experience, education and the use of groundbreaking technology, are prepared to pioneer social and environmental action throughout the world.

expedition**Africa**2012

In the fall of 2012, **impossible2Possible (i2P) is going back to the incredible continent of Africa!** On this next adventure i2P will lead 8 Youth Ambassadors (aged 17-21) on the journey of their lives as they run across some of the most beautiful regions in the Republic of Botswana – a country of 2 million people that is located just north of South Africa. The i2P Youth Ambassadors will relay information back to thousands of students in classrooms around the world as they study water, share the experience of running ultra marathons day after day, and learn what it takes to execute an international expedition.

Botswana (which is roughly the size of the Canadian Province of Alberta or the U.S. State of Texas) is surrounded on all sides by land and has no direct access to seaports, yet still manages to thrive in the world economy. It boasts one of the highest economic growth rates in the world and ranks as an 'upper-middle' economy by the World Bank - one of only four countries on the entire continent to achieve such status. The economy has been fueled by diamond mining, agriculture, and a strong footing in the banking and financial sectors.



The most pressing health challenge for the country, with a ranking of 2nd worst in the world, has far and away been the epidemic of HIV/AIDS, Botswana recently became the first African country to offer antiretroviral drugs to a majority of suffering patients and the effects of this program are leading the way and setting a positive example across the continent.

The landscape of Botswana has some interesting contrasts. The majority of the country is covered by the Kalahari Desert yet, in the North lies the flourishing Okavango Delta, and to the East are the Makgadikgadi pans, which are visible from space, and are some of the largest salt flats in the world.

This year i2P has partnered with Simon Fraser University to offer an enhanced educational curriculum to classrooms that wish to learn about water issues along with our Youth Ambassadors. Our education team will be available in the weeks leading up to, and during, the expedition to guide students and teachers through topical questions, class exercises, and videos on water. There will also be opportunity for live video conferencing with the Youth Ambassadors getting a first hand look at the water issues in Botswana.

This amazing project to Botswana comes on the heels of successful expeditions to Baffin Island, the Sahara Desert, the Amazon Basin, Bolivia, and India. The educational topic for this project will be water and students from around the world will have their eyes opened to our most precious resource.



SPONSORS & PARTNERS



Please visit www.facebook.com/iclickuread for more information on an expedition-specific campaign from we(e)press.



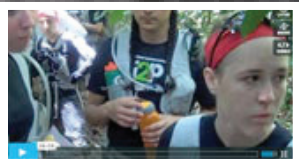
“ WATER “

Simon Fraser University (SFU) and i2P have partnered to create a captivating curriculum centered on the topic of Water. The program will include an introduction to the awareness of the essential need for water and food by all living organisms, the costs associated with delivering drinking water to communities around the world, and how quality of life is affected directly and indirectly by access or lack thereof, to clean drinking water. The Experiential Learning Program and accompanying Challenge Based learning projects have proven extremely successful for teachers and students alike.

The eight i2P Youth Ambassadors will be the direct conduits of information back to thousands of students following intently from around the world. These Youth Ambassadors will be the lead researchers for an Experiential Learning Program like no other on the planet. The Exploratory Program will see students from around the globe ask questions for which the Youth Ambassadors will be tasked to find the answers.

A live and interactive website is the portal to every impossible2Possible Expedition! With each new project our dedicated team of volunteers works very hard to provide new and improved features. All content is free, and schools have access to all content at no charge. This content is updated at least once a day (and sometimes) more on the i2P homepage, and partner sites like Outside Online and CNN will provide an update on the Expedition a handful of times during its duration.

Please follow along and learn with students around the world as we all learn about our most precious resource!



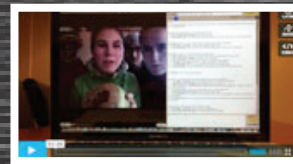
VIDEO/PHOTO JOURNALS



LIVE TRACKER



FACEBOOK/
TWITTER



LIVE VIDEO
CONFERENCING



EXTRAORDINARY
ACTS



SCHOOL REGISTRATION NOW OPEN!

REGISTER YOUR SCHOOL AT:

<http://i2p.force.com/AfricaSchoolRegistration>

i2P provided a real-world connection to our curriculum learning that as a teacher you are always striving to create. We were able to apply what we were learning to the real world as we learned about it! Being part of the i2P community was enormously motivational and demonstrated to me and my class that anything is possible with determination!

*- Shelley Stedman
MacLachlan College
Oakville, ON*

Changing the way we educate our children begins with providing unique, real-world experiences in the classroom; Providing opportunities that our students can take ownership over, integrate technology and create meaningful projects. Southside Elementary's 5th grade students worked collaboratively to create podcasts which were aired on the local radio station, and technology to create posters to advertise their podcasts. Being able to witness the collaboration between our students and the i2P team brought everything to life. Thanks for the amazing experiences!

*- Kathy Hobbs, Lisa Gault and Dan Wells
Southside Elementary School
Starke, FL*

